

# ERIOCHROME BLACK T

## Safety Data Sheet

according to Regulation (EU) 2015/830

Date of issue: 01/06/2022 Version: 0.0

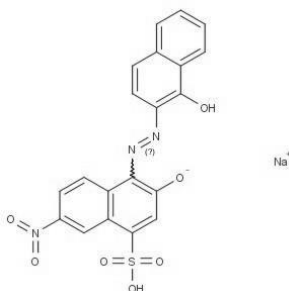
Doc. No: SDS-920.D01/2



### SECTION 1: Identification of the substance/mixture and of the company/undertaking

#### 1.1. Product identifier

Product form	: Substance
Trade name	: ERIOCHROME BLACK T
EC No	: 217-250-3
CAS No	: 1787-61-7
Type of product	: Pure substance
Formula	: $C_{20}H_{12}N_3NaO_7S$
Chemical structure	:



Synonyms	: 1-naphtalenesulfonic acid, 3-hydroxy-4-((1-hydroxy-2-naphthalenyl)azo)-7-nitro-, monosodium salt / 3-hydroxy-4-((1-hydroxy-2-naphtalenyl)azo)7-nitro-1-naphtalene sulfonic acid monosodium salt / 3-hydroxy-4(1-hydroxy-2-naphthylazo)7-nitro-1-naphtalene sulfonic acid sodium salt / acid chrome black A / acid chrome black ET / acid chrome black ET extra / acid chrome black ethyl / acid chrome black ethyl extra / acid chrome black ETN / acid chrome black special / alizarine chrome black PT / alizarine chrome black PT supra / anthranol chrome black T / azochromol black T / BC 78924 / C.I. 14645 / C.I. mordant black 11 (VAN) / C.I. mordant black 11 / C.I. mordant black 11, monosodium salt / calcochrome Black T / chromazine Black T / chrome Black ETOO / chrome black PB / chrome black special / chrome black T / chrome Black TK / chrome Black TX / chrome Deep Black T / chrome fast black CAT / chrome fast black KIT / chrome fast black T / chrome fast black TS / chromocard black T / chromogen black ethyl OO / chromogen black ETOO / chromogen black ETR / chromogene black ET extra / chromogene black ETOO special / chromogene black ethyl extra / chromogene black ETO-CF / chromogene black ETOO special / chromogene black ETOO supra CF / chromogene black T / chromogene black T 160 / cromal deep black NS / diacromo black PA / diacromo black PSS / diadem chrome black DFA / diadem chrome black T / diadem chrome black TDS / diadem chrome black TW / diamantine black T / diamond black PT / durochrome black ETOO / durochrome black T / durochrome black TS / durochrome black W DFA / eniacromo black PA / Environmentally hazardous substance, solid, n.o.s. / erio chrome black TN / eriochrome black DW / eriochrome black T, SG / eriochrome black TDW / eriochrome black TND / eriochrome black TSS / fast chrome black T / fenakrom black ET / fenakrom black ethyl / hispacrom black T / java chrome black T / kenachrome black T / lighthouse chrome black T / magracrom black A / mitsui chrome black PB / mordant black 11 / omega chrome black S / omega chrome black T / omega chrome black TDW / pontachrome black TA / potting black C / potting chrome black CL / salicina black C extra / salicine chrome black HC / schultz No. 241 / sodium 3-hydroxy-4-[(1-hydroxy-2-naphthyl)azo]-7-nitronaphthalene-1-sulphonate / solochromate black W DFA / solochrome black / solochrome black T / solochrome black W DFA / sunchromine black BT / sunchromine black ET / sunchromine black ethyl / sunchromine black HC / superchrome black T / superchrome black TS / telon chrome black C / telon chrome black CR / tertrochrome black S / tertrochrome black TS / yodochrome black ETX
----------	--------------------------------------------------------------------------------------------------------------------------------------------------------------------------------------------------------------------------------------------------------------------------------------------------------------------------------------------------------------------------------------------------------------------------------------------------------------------------------------------------------------------------------------------------------------------------------------------------------------------------------------------------------------------------------------------------------------------------------------------------------------------------------------------------------------------------------------------------------------------------------------------------------------------------------------------------------------------------------------------------------------------------------------------------------------------------------------------------------------------------------------------------------------------------------------------------------------------------------------------------------------------------------------------------------------------------------------------------------------------------------------------------------------------------------------------------------------------------------------------------------------------------------------------------------------------------------------------------------------------------------------------------------------------------------------------------------------------------------------------------------------------------------------------------------------------------------------------------------------------------------------------------------------------------------------------------------------------------------------------------------------------------------------------------------------------------------------------------------------------------------------------------------------------------------------------------------------------------------------------------------------------------------------------------------------------------------------------------------------------------------------------------------------------------------------------------------------------------------------------------------------------------------------------------------------------------------------------------------------------------------------------------------------------------------------------------------------------------------------------------------------

#### 1.2. Relevant identified uses of the substance or mixture and uses advised against

##### 1.2.1. Relevant identified uses

Industrial/Professional use spec	: Industrial For professional use only
Use of the substance/mixture	: Chemical substance for research Laboratory chemical

##### 1.2.2. Uses advised against

No additional information available

#### 1.3. Details of the supplier of the safety data sheet

ISOLAB Laborgeräte GmbH  
Am Dillhof 2 - 63863 Eschau / GERMANY  
Tel: + 49 93 74 / 978 55-0  
Fax: +49 93 74 / 978 55-29  
[prodsafe@isolab.de](mailto:prodsafe@isolab.de)

# ERIOCHROME BLACK T

## Safety Data Sheet

according to Regulation (EU) 2015/830

Date of issue: 01/06/2022 Version: 0.0

Doc. No: SDS-920.D01/2



### 1.4. Emergency telephone number

Country	Organisation/Company	Address	Emergency number	Comment
Germany	Giftnotruf der Charité CBF, Haus VIII (Wirtschaftsgebäude), UG	Hindenburgdamm 30 12203 Berlin	+49 30 19240	

## SECTION 2: Hazards identification

### 2.1. Classification of the substance or mixture

#### Classification according to Regulation (EC) No. 1272/2008 [CLP]

Eye Irrit. 2 H319

Aquatic Chronic 2 H411

Full text of hazard classes and H-statements : see section 16

#### Adverse physicochemical, human health and environmental effects

No additional information available

### 2.2. Label elements

#### Labelling according to Regulation (EC) No. 1272/2008 [CLP]

Hazard pictograms (CLP) :



Signal word (CLP) :

Warning

Hazard statements (CLP) :

H319 - Causes serious eye irritation  
H411 - Toxic to aquatic life with long lasting effects

Precautionary statements (CLP) :

P273 - Avoid release to the environment.  
P305 + P351 + P338 - IF IN EYES: Rinse cautiously with water for several minutes. Remove contact lenses, if present and easy to do. Continue rinsing.

### 2.3. Other hazards

This substance/mixture does not meet the PBT criteria of REACH regulation, annex XIII

This substance/mixture does not meet the vPvB criteria of REACH regulation, annex XIII

## SECTION 3: Composition/information on ingredients

### 3.1. Substances

Name	Product identifier	%
ERIOCHROME BLACK T	(CAS No) 1787-61-7 (EC No) 217-250-3	100

Full text of H-statements: see section 16

### 3.2. Mixtures

Not applicable

## SECTION 4: First aid measures

### 4.1. Description of first aid measures

First-aid measures general	: Check the vital functions. Unconscious: maintain adequate airway and respiration. Respiratory arrest: artificial respiration or oxygen. Cardiac arrest: perform resuscitation. Victim conscious with laboured breathing: half-seated. Victim in shock: on his back with legs slightly raised. Vomiting: prevent asphyxia/aspiration pneumonia. Prevent cooling by covering the victim (no warming up). Keep watching the victim. Give psychological aid. Keep the victim calm, avoid physical strain. Depending on the victim's condition: doctor/hospital.
First-aid measures after inhalation	: Remove the victim into fresh air. Respiratory problems: consult a doctor/medical service.
First-aid measures after skin contact	: Rinse with water. Take victim to a doctor if irritation persists.
First-aid measures after eye contact	: Rinse immediately with plenty of water. Do not apply neutralizing agents. Take victim to an ophthalmologist if irritation persists.
First-aid measures after ingestion	: Rinse mouth with water. Immediately after ingestion: give lots of water to drink. Call Poison Information Centre ( <a href="http://www.big.be/antigif.htm">www.big.be/antigif.htm</a> ). Consult a doctor/medical service if you feel unwell. Ingestion of large quantities: immediately to hospital.

# ERIOCHROME BLACK T

## Safety Data Sheet

according to Regulation (EU) 2015/830

Date of issue: 01/06/2022 Version: 0.0

Doc. No: SDS-920.D01/2



### 4.2. Most important symptoms and effects, both acute and delayed

Symptoms/injuries after inhalation : AFTER INHALATION OF DUST: Slight irritation.  
Symptoms/injuries after skin contact : Slight irritation.  
Symptoms/injuries after eye contact : Irritation of the eye tissue.

### 4.3. Indication of any immediate medical attention and special treatment needed

No additional information available

## SECTION 5: Fire-fighting measures

### 5.1. Extinguishing media

Suitable extinguishing media : Water spray. Alcohol-resistant foam. ABC powder. Carbon dioxide.  
Unsuitable extinguishing media : No unsuitable extinguishing media known.

### 5.2. Special hazards arising from the substance or mixture

Fire hazard : DIRECT FIRE HAZARD. Not easily combustible. In finely divided state: increased fire hazard. INDIRECT FIRE HAZARD. Heating increases the fire hazard.  
Explosion hazard : DIRECT EXPLOSION HAZARD. Fine dust is explosive with air. INDIRECT EXPLOSION HAZARD. Dust cloud can be ignited by a spark.

### 5.3. Advice for firefighters

Precautionary measures fire : Exposure to fire/heat: keep upwind. Exposure to fire/heat: consider evacuation. Exposure to fire/heat: have neighbourhood close doors and windows.  
Firefighting instructions : Dilute toxic gases with water spray. Take account of environmentally hazardous firefighting water. Use water moderately and if possible collect or contain it.  
Protection during firefighting : Heat/fire exposure: compressed air/oxygen apparatus.

## SECTION 6: Accidental release measures

### 6.1. Personal precautions, protective equipment and emergency procedures

#### 6.1.1. For non-emergency personnel

Protective equipment : Gloves. Safety glasses. Protective clothing. Dust cloud production: compressed air/oxygen apparatus. See "Material-Handling" to select protective clothing.  
Emergency procedures : Mark the danger area. Prevent dust cloud formation. No naked flames. Wash contaminated clothes.  
Measures in case of dust release : In case of dust production: keep upwind. Dust production: have neighbourhood close doors and windows. Dust production: stop engines and no smoking. In case of dust production: no naked flames or sparks. Dust: spark-/explosionproof appliances/lighting equipment.

#### 6.1.2. For emergency responders

No additional information available

### 6.2. Environmental precautions

Prevent soil and water pollution. Prevent spreading in sewers.

### 6.3. Methods and material for containment and cleaning up

For containment : Contain released substance, pump into suitable containers. Plug the leak, cut off the supply. Dam up the solid spill. Knock down/dilute dust cloud with water spray. Powdered form: no compressed air for pumping over spills.  
Methods for cleaning up : Stop dust cloud by covering with sand/earth. Scoop solid spill into closing containers. Powdered: do not use compressed air for pumping over spills. Carefully collect the spill/leftovers. Clean contaminated surfaces with an excess of water. Wash clothing and equipment after handling.

### 6.4. Reference to other sections

No additional information available

## SECTION 7: Handling and storage

### 7.1. Precautions for safe handling

Precautions for safe handling : Comply with the legal requirements. Clean contaminated clothing. Do not discharge the waste into the drain. Powdered form: no compressed air for pumping over. Avoid raising dust. Keep away from naked flames/heat. Finely divided: spark- and explosionproof appliances. Finely divided: keep away from ignition sources/sparks. Observe normal hygiene standards. Keep container tightly closed. Carry operations in the open/under local exhaust/ventilation or with respiratory protection.

### 7.2. Conditions for safe storage, including any incompatibilities

Incompatible products : Strong acids. Strong bases.

# ERIOCHROME BLACK T

## Safety Data Sheet

according to Regulation (EU) 2015/830

Date of issue: 01/06/2022 Version: 0.0

Doc. No: SDS-920.D01/2



Incompatible materials	: Direct sunlight. Sources of ignition.
Heat and ignition sources	: KEEP SUBSTANCE AWAY FROM: heat sources. ignition sources.
Information on mixed storage	: KEEP SUBSTANCE AWAY FROM: oxidizing agents. reducing agents.
Storage area	: Store in a dry area. Keep container in a well-ventilated place. Meet the legal requirements.
Special rules on packaging	: SPECIAL REQUIREMENTS: closing. correctly labelled. meet the legal requirements. Secure fragile packagings in solid containers.
Packaging materials	: SUITABLE MATERIAL: No data available. MATERIAL TO AVOID: No data available.

### 7.3. Specific end use(s)

No additional information available

## SECTION 8: Exposure controls/personal protection

### 8.1. Control parameters

No additional information available

### 8.2. Exposure controls

#### Personal protective equipment:

Safety glasses. Gloves.

#### Materials for protective clothing:

GIVE GOOD RESISTANCE: nitrile rubber

#### Hand protection:

Gloves

#### Eye protection:

Safety glasses. In case of dust production: protective goggles

#### Skin and body protection:

Protective clothing

#### Respiratory protection:

Dust production: dust mask with filter type P1

Device	Filter type	Condition	Standard
Dust mask	Type P1		



## SECTION 9: Physical and chemical properties

### 9.1. Information on basic physical and chemical properties

Physical state	: Solid
Appearance	: Solid. Powder.
Molecular mass	: 461.38 g/mol
Colour	: Brown-black.
Odour	: Odourless.
Odour threshold	: No data available
pH	: No data available
Relative evaporation rate (butylacetate=1)	: No data available
Melting point	: No data available
Freezing point	: No data available
Boiling point	: No data available
Flash point	: No data available
Auto-ignition temperature	: 220 °C
Decomposition temperature	: No data available

# ERIOCHROME BLACK T

## Safety Data Sheet

according to Regulation (EU) 2015/830

Date of issue: 01/06/2022 Version: 0.0

Doc. No: SDS-920.D01/2



Flammability (solid, gas)	: No data available
Vapour pressure	: No data available
Relative vapour density at 20 °C	: No data available
Relative density	: 1.7
Density	: No data available
Solubility	: No data available
Log Pow	: 1.78 - 4.35 (Calculated)
Viscosity, kinematic	: No data available
Viscosity, dynamic	: No data available
Explosive properties	: No data available
Oxidising properties	: No data available
Explosive limits	: No data available

### 9.2. Other information

VOC content	: 0 %
Other properties	: Substance has acid reaction.

## SECTION 10: Stability and reactivity

### 10.1. Reactivity

On burning: release of toxic and corrosive gases/vapours (nitrous vapours, sulphur oxides, carbon monoxide - carbon dioxide).

### 10.2. Chemical stability

No data available.

### 10.3. Possibility of hazardous reactions

No additional information available

### 10.4. Conditions to avoid

No additional information available

### 10.5. Incompatible materials

No additional information available

### 10.6. Hazardous decomposition products

No additional information available

## SECTION 11: Toxicological information

### 11.1. Information on toxicological effects

Acute toxicity : Not classified

ERIOCHROME BLACK T (1787-61-7)	
LD50 oral rat	17590 mg/kg (Rat)
LD50 dermal rabbit	> 3000 mg/kg (Rabbit)
LC50 inhalation rat (mg/l)	> 2 mg/l/4h (Rat)

Skin corrosion/irritation	: Not classified pH: 4.2 (0.29 %)
Serious eye damage/irritation	: Causes serious eye irritation. pH: 4.2 (0.29 %)
Respiratory or skin sensitisation	: Not classified
Germ cell mutagenicity	: Not classified
Carcinogenicity	: Not classified
Reproductive toxicity	: Not classified
STOT-single exposure	: Not classified
STOT-repeated exposure	: Not classified
Aspiration hazard	: Not classified

## SECTION 12: Ecological information

### 12.1. Toxicity

Ecology - general : Dangerous for the environment.

# ERIOCHROME BLACK T

## Safety Data Sheet

according to Regulation (EU) 2015/830

Date of issue: 01/06/2022 Version: 0.0

Doc. No: SDS-920.D01/2



Ecology - air	: Not classified as dangerous for the ozone layer (Regulation (EC) No 1005/2009).
Ecology - water	: Water pollutant (surface water). Ground water pollutant. Maximum concentration in drinking water: 200 mg/l (sodium) (Directive 98/83/EC). Toxic to fishes. Harmful to invertebrates (Daphnia). Highly toxic to algae. pH shift. Not harmful to activated sludge.

ERIOCHROME BLACK T (1787-61-7)	
LC50 fish 1	7.3 mg/l (LC50; OECD 203: Fish, Acute Toxicity Test; 96 h; Salmo gairdneri)
EC50 Daphnia 1	53 mg/l (EC50; 48 h)

### 12.2. Persistence and degradability

ERIOCHROME BLACK T (1787-61-7)	
Persistence and degradability	Not readily biodegradable in water.
Biochemical oxygen demand (BOD)	0 g O <sub>2</sub> /g substance
Chemical oxygen demand (COD)	1.269 g O <sub>2</sub> /g substance

### 12.3. Bioaccumulative potential

ERIOCHROME BLACK T (1787-61-7)	
Log Pow	1.78 - 4.35 (Calculated)

### 12.4. Mobility in soil

No additional information available

### 12.5. Results of PBT and vPvB assessment

ERIOCHROME BLACK T (1787-61-7)	
This substance/mixture does not meet the PBT criteria of REACH regulation, annex XIII	
This substance/mixture does not meet the vPvB criteria of REACH regulation, annex XIII	

### 12.6. Other adverse effects

No additional information available

## SECTION 13: Disposal considerations

### 13.1. Waste treatment methods

Product/Packaging disposal recommendations : Remove waste in accordance with local and/or national regulations. Hazardous waste shall not be mixed together with other waste. Different types of hazardous waste shall not be mixed together if this may entail a risk of pollution or create problems for the further management of the waste. Hazardous waste shall be managed responsibly. All entities that store, transport or handle hazardous waste shall take the necessary measures to prevent risks of pollution or damage to people or animals. Dissolve or mix with a combustible solvent. Remove to an authorized incinerator equipped with an afterburner and a flue gas scrubber with energy recovery. Do not discharge into drains or the environment.

Additional information : LWCA (the Netherlands): KGA category 03. Hazardous waste according to Directive 2008/98/EC.

European List of Waste (LoW) code : 16 05 06\* - laboratory chemicals consisting of or containing dangerous substances including mixtures of laboratory chemicals

## SECTION 14: Transport information

In accordance with ADR / RID / IMDG / IATA / ADN

ADR	IMDG	IATA	ADN	RID
<b>14.1. UN number</b>				
3077	3077	3077	3077	3077
<b>14.2. UN proper shipping name</b>				
ENVIRONMENTALLY HAZARDOUS SUBSTANCE, SOLID, N.O.S.	ENVIRONMENTALLY HAZARDOUS SUBSTANCE, SOLID, N.O.S.	Environmentally hazardous substance, solid, n.o.s.	ENVIRONMENTALLY HAZARDOUS SUBSTANCE, SOLID, N.O.S.	ENVIRONMENTALLY HAZARDOUS SUBSTANCE, SOLID, N.O.S.
<b>Transport document description</b>				
UN 3077 ENVIRONMENTALLY HAZARDOUS SUBSTANCE, SOLID, N.O.S., 9, III, (E)	UN 3077 ENVIRONMENTALLY HAZARDOUS SUBSTANCE, SOLID, N.O.S., 9, III, MARINE POLLUTANT	UN 3077 Environmentally hazardous substance, solid, n.o.s., 9, III	UN 3077 ENVIRONMENTALLY HAZARDOUS SUBSTANCE, SOLID, N.O.S., 9, III	UN 3077 ENVIRONMENTALLY HAZARDOUS SUBSTANCE, SOLID, N.O.S., 9, III



# ERIOCHROME BLACK T

## Safety Data Sheet

according to Regulation (EU) 2015/830

Date of issue: 01/06/2022 Version: 0.0

Doc. No: SDS-920.D01/2



ADR	IMDG	IATA	ADN	RID
<b>14.3. Transport hazard class(es)</b>				
9	9	9	9	9
<b>14.4. Packing group</b>				
III	III	III	III	III
<b>14.5. Environmental hazards</b>				
Dangerous for the environment : Yes	Dangerous for the environment : Yes Marine pollutant : Yes	Dangerous for the environment : Yes	Dangerous for the environment : Yes	Dangerous for the environment : Yes
No supplementary information available				

### 14.6. Special precautions for user

#### - Overland transport

Classification code (ADR)	: M7
Special provisions (ADR)	: 274, 335, 601, 375
Limited quantities (ADR)	: 5kg
Excepted quantities (ADR)	: E1
Packing instructions (ADR)	: P002, IBC08, LP02, R001
Mixed packing provisions (ADR)	: MP10
Portable tank and bulk container instructions (ADR)	: T1, BK1, BK2
Portable tank and bulk container special provisions (ADR)	: TP33
Tank code (ADR)	: SGAV, LGBV
Vehicle for tank carriage	: AT
Transport category (ADR)	: 3
Special provisions for carriage - Packages (ADR)	: V13
Special provisions for carriage - Bulk (ADR)	: VC1, VC2
Special provisions for carriage - Loading, unloading and handling (ADR)	: CV13
Hazard identification number (Kemler No.)	: 90
Orange plates	:
Tunnel restriction code (ADR)	: E
EAC code	: 2Z

#### - Transport by sea

Transport regulations (IMDG)	: Subject
Special provisions (IMDG)	: 274, 335, 966, 967, 969
Limited quantities (IMDG)	: 5 kg
Excepted quantities (IMDG)	: E1
Packing instructions (IMDG)	: P002, LP02
Special packing provisions (IMDG)	: PP12
IBC packing instructions (IMDG)	: IBC08
IBC special provisions (IMDG)	: B3
Tank instructions (IMDG)	: T1, BK1, BK2, BK3
Tank special provisions (IMDG)	: TP33
EmS-No. (Fire)	: F-A
EmS-No. (Spillage)	: S-F
Stowage category (IMDG)	: A

# ERIOCHROME BLACK T

## Safety Data Sheet

according to Regulation (EU) 2015/830

Date of issue: 01/06/2022 Version: 0.0

Doc. No: SDS-920.D01/2



Stowage and handling (IMDG) : SW23

MFAG-No : 171

### - Air transport

Transport regulations (IATA) : Subject to the provisions

PCA Excepted quantities (IATA) : E1

PCA Limited quantities (IATA) : Y956

PCA limited quantity max net quantity (IATA) : 30kgG

PCA packing instructions (IATA) : 956

PCA max net quantity (IATA) : 400kg

CAO packing instructions (IATA) : 956

CAO max net quantity (IATA) : 400kg

Special provisions (IATA) : A97, A158, A179, A197

ERG code (IATA) : 9L

### - Inland waterway transport

Classification code (ADN) : M7

Special provisions (ADN) : 274, 335, 375, 601

Limited quantities (ADN) : 5 kg

Excepted quantities (ADN) : E1

Carriage permitted (ADN) : T\* B\*\*

Equipment required (ADN) : PP, A

Number of blue cones/lights (ADN) : 0

### - Rail transport

Transport regulations (RID) : Subject

Classification code (RID) : M7

Special provisions (RID) : 274, 335, 375, 601

Limited quantities (RID) : 5kg

Excepted quantities (RID) : E1

Packing instructions (RID) : P002, IBC08, LP02, R001

Special packing provisions (RID) : PP12, B3

Mixed packing provisions (RID) : MP10

Portable tank and bulk container instructions (RID) : T1, BK1, BK2

Portable tank and bulk container special provisions (RID) : TP33

Tank codes for RID tanks (RID) : SGAV, LGBV

Transport category (RID) : 3

Special provisions for carriage – Packages (RID) : W13

Special provisions for carriage – Bulk (RID) : VC1, VC2

Special provisions for carriage - Loading, unloading and handling (RID) : CW13, CW31

Colis express (express parcels) (RID) : CE11

Hazard identification number (RID) : 90

### 14.7. Transport in bulk according to Annex II of Marpol and the IBC Code

Not applicable

## SECTION 15: Regulatory information

### 15.1. Safety, health and environmental regulations/legislation specific for the substance or mixture

#### 15.1.1. EU-Regulations

No REACH Annex XVII restrictions

ERIOCHROME BLACK T is not on the REACH Candidate List

ERIOCHROME BLACK T is not on the REACH Annex XIV List

VOC content : 0 %



# ERIOCHROME BLACK T

## Safety Data Sheet

according to Regulation (EU) 2015/830

Date of issue: 01/06/2022 Version: 0.0

Doc. No: SDS-920.D01/2



### 15.1.2. National regulations

#### Germany

VwVwS Annex reference : Water hazard class (WGK) 2, hazard to waters (Classification according to VwVwS, Annex 3; ID No. 3437)

WGK remark : Classification water polluting based on the R-phrases in compliance with Verwaltungsvorschrift wassergefährdender Stoffe (VwVwS) of 27 July 2005 (Anhang 3)

12th Ordinance Implementing the Federal Immission Control Act - 12.BImSchV : Is not subject of the 12. BImSchV (Hazardous Incident Ordinance)

#### Netherlands

SZW-lijst van kankerverwekkende stoffen : The substance is not listed

SZW-lijst van mutagene stoffen : The substance is not listed

NIET-limitatieve lijst van voor de voortplanting giftige stoffen – Borstvoeding : The substance is not listed

NIET-limitatieve lijst van voor de voortplanting giftige stoffen – Vruchtbaarheid : The substance is not listed

NIET-limitatieve lijst van voor de voortplanting giftige stoffen – Ontwikkeling : The substance is not listed

### 15.2. Chemical safety assessment

No additional information available

## SECTION 16: Other information

Abbreviations and acronyms:

ADN	European Agreement concerning the International Carriage of Dangerous Goods by Inland Waterways
ADR	European Agreement concerning the International Carriage of Dangerous Goods by Road
ATE	Acute Toxicity Estimate
BCF	Bioconcentration factor
CLP	Classification Labelling Packaging Regulation; Regulation (EC) No 1272/2008
EC50	Median effective concentration
IATA	International Air Transport Association
IMDG	International Maritime Dangerous Goods
LC50	Median lethal concentration
LD50	Median lethal dose
PBT	Persistent Bioaccumulative Toxic
REACH	Registration, Evaluation, Authorisation and Restriction of Chemicals Regulation (EC) No 1907/2006
RID	Regulations concerning the International Carriage of Dangerous Goods by Rail
SDS	Safety Data Sheet
vPvB	Very Persistent and Very Bioaccumulative

Data sources : REGULATION (EC) No 1272/2008 OF THE EUROPEAN PARLIAMENT AND OF THE COUNCIL of 16 December 2008 on classification, labelling and packaging of substances and mixtures, amending and repealing Directives 67/548/EEC and 1999/45/EC, and amending Regulation (EC) No 1907/2006.

Full text of H- and EUH-statements:	
Aquatic Chronic 2	Hazardous to the aquatic environment — Chronic Hazard, Category 2
Eye Irrit. 2	Serious eye damage/eye irritation, Category 2
H319	Causes serious eye irritation
H411	Toxic to aquatic life with long lasting effects

SDS ISOLAB

*This information is based on our current knowledge and is intended to describe the product for the purposes of health, safety and environmental requirements only. It should not therefore be construed as guaranteeing any specific property of the product*