

VICTORIA BLUE

Safety Data Sheet

according to Regulation (EU) 2015/830

Date of issue: 21/02/2017

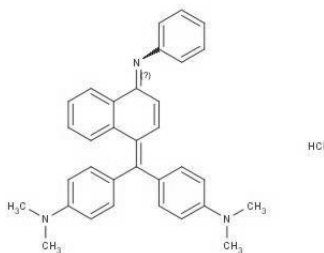
Doc No: SDS- 980.D01/0



SECTION 1: Identification of the substance/mixture and of the company/undertaking

1.1. Product identifier

Product form : Substance
Substance name : VICTORIA BLUE
EC-No. : 219-943-6
CAS-No. : 2580-56-5
Type of product : Pure substance
Formula : C33H32ClN3
Chemical structure :



Synonyms

: [4-[[4-anilino-1-naphthyl][4-(dimethylamino)phenyl]methylene]cyclohexa-2,5-dien-1-ylidene]dimethylammonium chloride / 26; Basic Blue B / ADC Victoria Blue B / Aizen Victoria Blue BH / Basazol C Blue 57 / Basic Blue / Basic Victoria Blue B / Basonyl Blue 640 / Basonyl Blue 644 / Basovict Victoria Blue / BTK Victoria Blue / C.I. 44045 / Calcozine Blue B / Conbasic Blue AK / C-WR Blue 8 / Dycosbasic Victoria Blue B / Flexo Blue 630 / Flexo Blue 640 / Hecto Blue B / Hidaco Victoria Blue B / Libbase Victoria Blue LB / Lowacryl Blue 26 / methanaminium, N-[4-[[4-(dimethylamino)phenyl][4-(phenylamino)-1-naphthalenyl]methylene]-2,5-cyclohexadien-1-ylidene]-N- / Methanaminium, N-[4-[[4-(dimethylamino)phenyl][4-(phenylamino)-1-naphthalenyl]methylene]-2,5-cyclohexadien-1-ylidene]-N-methyl-, chloride / Mitsui Victoria Blue B / Ravi Victoria Blue B / Tertrophenol Blue / Victoria Blue / Victoria Blue 2B / Victoria Blue B / Victoria Blue B 353 / Victoria Blue B chloride / Victoria Blue BA / Victoria Blue BH / Victoria Blue BN / Victoria Blue BN Cl 44045 / Victoria Blue BP / Victoria Blue BS / Victoria Blue BSA / Victoria Blue BX / Victoria Blue FB / Victoria Pure Blue B / Victoria Pure Blue BC

1.2. Relevant identified uses of the substance or mixture and uses advised against

1.2.1. Relevant identified uses

Industrial/Professional use spec : For professional use only
Use of the substance/mixture : Dye stuff/pigment
Laboratory chemical

1.2.2. Uses advised against

No additional information available

1.3. Details of the supplier of the safety data sheet

ISOLAB GmbH
Bahnhofstrasse 10, D-97877
Wertheim - Germany
T +49 93 42 912 355 - F +49 93 42 912 357
prodsafe@isolab.de

1.4. Emergency telephone number

Country	Organisation/Company	Address	Emergency number	Comment
Germany	Giftnotruf der Charité CBF, Haus VIII (Wirtschaftgebäude), UG	Hindenburgdamm 30 12203 Berlin	+49 30 19240	

SECTION 2: Hazards identification

2.1. Classification of the substance or mixture

Classification according to Regulation (EC) No. 1272/2008 [CLP]

Acute Tox. 4 (Oral) H302
Eye Irrit. 2 H319
Carc. 1B H350
Aquatic Acute 1 H400

VICTORIA BLUE

Safety Data Sheet

according to Regulation (EU) 2015/830

Date of issue: 21/02/2017

Doc No: SDS- 980.D01/0



Aquatic Chronic 1 H410

Full text of hazard classes and H-statements : see section 16

Adverse physicochemical, human health and environmental effects

May cause cancer. Harmful if swallowed. Causes serious eye irritation. Very toxic to aquatic life with long lasting effects.

2.2. Label elements

Labelling according to Regulation (EC) No. 1272/2008 [CLP]

Hazard pictograms (CLP) :



Signal word (CLP) :

Danger

Hazard statements (CLP) :

H302 - Harmful if swallowed
H319 - Causes serious eye irritation
H350 - May cause cancer
H410 - Very toxic to aquatic life with long lasting effects

Precautionary statements (CLP) :

P201 - Obtain special instructions before use
P202 - Do not handle until all safety precautions have been read and understood
P264 - Wash hands, forearms and face thoroughly after handling
P270 - Do not eat, drink or smoke when using this product
P273 - Avoid release to the environment
P280 - Wear protective gloves/protective clothing/eye protection/face protection

2.3. Other hazards

This substance/mixture does not meet the PBT criteria of REACH regulation, annex XIII

This substance/mixture does not meet the vPvB criteria of REACH regulation, annex XIII

SECTION 3: Composition/information on ingredients

3.1. Substances

Name	Product identifier	%
VICTORIA BLUE substance listed as REACH Candidate ([4-[[4-anilino-1-naphthyl]]4-(dimethylamino)phenyl]methylene)cyclohexa-2,5-dien-1-ylidene dimethylammonium chloride (C.I. Basic Blue 26) [with ≥ 0.1% of Michler's ketone (EC No. 202-027-5) or Michler's base (EC No. 202-959-2)]	(CAS-No.) 2580-56-5 (EC-No.) 219-943-6	100

Full text of H-statements: see section 16

3.2. Mixtures

Not applicable

SECTION 4: First aid measures

4.1. Description of first aid measures

First-aid measures general : IF exposed or concerned: Get medical advice/attention. Call a poison center or a doctor if you feel unwell.

First-aid measures after inhalation : Remove person to fresh air and keep comfortable for breathing.

First-aid measures after skin contact : Wash skin with plenty of water.

First-aid measures after eye contact : Rinse cautiously with water for several minutes. Remove contact lenses, if present and easy to do. Continue rinsing. If eye irritation persists: Get medical advice/attention.

First-aid measures after ingestion : Rinse mouth. Call a poison center or a doctor if you feel unwell.

4.2. Most important symptoms and effects, both acute and delayed

Symptoms/effects after eye contact : Eye irritation.

4.3. Indication of any immediate medical attention and special treatment needed

Treat symptomatically.

VICTORIA BLUE

Safety Data Sheet

according to Regulation (EU) 2015/830

Date of issue: 21/02/2017

Doc No: SDS- 980.D01/0



SECTION 5: Fire-fighting measures

5.1. Extinguishing media

Suitable extinguishing media : Water spray. Dry powder. Foam.

5.2. Special hazards arising from the substance or mixture

Hazardous decomposition products in case of fire : Toxic fumes may be released.

5.3. Advice for firefighters

Protection during firefighting : Do not attempt to take action without suitable protective equipment. Self-contained breathing apparatus. Complete protective clothing.

SECTION 6: Accidental release measures

6.1. Personal precautions, protective equipment and emergency procedures

6.1.1. For non-emergency personnel

Emergency procedures : Only qualified personnel equipped with suitable protective equipment may intervene.

6.1.2. For emergency responders

Protective equipment : Do not attempt to take action without suitable protective equipment. For further information refer to section 8: "Exposure controls/personal protection".

6.2. Environmental precautions

Avoid release to the environment. Notify authorities if product enters sewers or public waters.

6.3. Methods and material for containment and cleaning up

For containment : Collect spillage.

Methods for cleaning up : Mechanically recover the product. Notify authorities if product enters sewers or public waters.

Other information : Dispose of materials or solid residues at an authorized site.

6.4. Reference to other sections

For further information refer to section 13.

SECTION 7: Handling and storage

7.1. Precautions for safe handling

Precautions for safe handling : Ensure good ventilation of the work station. Obtain special instructions before use. Do not handle until all safety precautions have been read and understood. Take all necessary technical measures to avoid or minimize the release of the product on the workplace. Limit quantities of product at the minimum necessary for handling and limit the number of exposed workers. Provide local exhaust or general room ventilation. Wear personal protective equipment. Floors, walls and other surfaces in the hazard area must be cleaned regularly. Avoid contact with skin and eyes.

Hygiene measures : Separate working clothes from town clothes. Launder separately. Do not eat, drink or smoke when using this product. Always wash hands after handling the product.

7.2. Conditions for safe storage, including any incompatibilities

Storage conditions : Store locked up. Store in a well-ventilated place. Keep cool.

Incompatible products : Strong acids. Strong bases.

Incompatible materials : Direct sunlight. Sources of ignition.

7.3. Specific end use(s)

No additional information available

SECTION 8: Exposure controls/personal protection

8.1. Control parameters

No additional information available

8.2. Exposure controls

Appropriate engineering controls:

Ensure good ventilation of the work station.

Personal protective equipment:

Gloves. Safety glasses. Protective clothing.

Hand protection:

VICTORIA BLUE

Safety Data Sheet

according to Regulation (EU) 2015/830

Date of issue: 21/02/2017

Doc No: SDS- 980.D01/0



Protective gloves

Eye protection:

Safety glasses

Skin and body protection:

Wear suitable protective clothing

Respiratory protection:

Wear respiratory protection



Environmental exposure controls:

Avoid release to the environment.

SECTION 9: Physical and chemical properties

9.1. Information on basic physical and chemical properties

Physical state	: Solid
Appearance	: Powder.
Molecular mass	: 506.08 g/mol
Colour	: Brownish red.
Odour	: odourless.
Odour threshold	: No data available
pH	: No data available
Relative evaporation rate (butylacetate=1)	: No data available
Melting point	: 206 °C
Freezing point	: Not applicable
Boiling point	: No data available
Flash point	: Not applicable
Auto-ignition temperature	: Not applicable
Decomposition temperature	: > 100 °C
Flammability (solid, gas)	: Non flammable
Vapour pressure	: No data available
Relative vapour density at 20 °C	: No data available
Relative density	: Not applicable
Solubility	: Soluble in hot water. Ether: 2 - 3 g/100ml
Log Pow	: No data available
Viscosity, kinematic	: Not applicable
Viscosity, dynamic	: No data available
Explosive properties	: No data available
Oxidising properties	: No data available
Explosive limits	: Not applicable

9.2. Other information

No additional information available

SECTION 10: Stability and reactivity

10.1. Reactivity

The product is non-reactive under normal conditions of use, storage and transport.

10.2. Chemical stability

Stable under normal conditions.

10.3. Possibility of hazardous reactions

No dangerous reactions known under normal conditions of use.

VICTORIA BLUE

Safety Data Sheet

according to Regulation (EU) 2015/830

Date of issue: 21/02/2017

Doc No: SDS- 980.D01/0



10.4. Conditions to avoid

None under recommended storage and handling conditions (see section 7).

10.5. Incompatible materials

No additional information available

10.6. Hazardous decomposition products

Under normal conditions of storage and use, hazardous decomposition products should not be produced.

SECTION 11: Toxicological information

11.1. Information on toxicological effects

Acute toxicity	: Oral: Harmful if swallowed.
Skin corrosion/irritation	: Not classified
Serious eye damage/irritation	: Causes serious eye irritation.
Respiratory or skin sensitisation	: Not classified
Germ cell mutagenicity	: Not classified
Carcinogenicity	: May cause cancer.
Reproductive toxicity	: Not classified
STOT-single exposure	: Not classified
STOT-repeated exposure	: Not classified
Aspiration hazard	: Not classified

SECTION 12: Ecological information

12.1. Toxicity

Ecology - general : Very toxic to aquatic life with long lasting effects.

12.2. Persistence and degradability

No additional information available

12.3. Bioaccumulative potential

No additional information available

12.4. Mobility in soil

No additional information available

12.5. Results of PBT and vPvB assessment

VICTORIA BLUE (2580-56-5)
This substance/mixture does not meet the PBT criteria of REACH regulation, annex XIII
This substance/mixture does not meet the vPvB criteria of REACH regulation, annex XIII

12.6. Other adverse effects

No additional information available

SECTION 13: Disposal considerations

13.1. Waste treatment methods

Waste treatment methods : Dispose of contents/container in accordance with licensed collector's sorting instructions.

SECTION 14: Transport information

In accordance with ADR / RID / IMDG / IATA / ADN

ADR	IMDG	IATA	ADN	RID
14.1. UN number				
3077	3077	3077	3077	3077
14.2. UN proper shipping name				
ENVIRONMENTALLY HAZARDOUS SUBSTANCE, SOLID, N.O.S.	ENVIRONMENTALLY HAZARDOUS SUBSTANCE, SOLID, N.O.S.	Environmentally hazardous substance, solid, n.o.s.	ENVIRONMENTALLY HAZARDOUS SUBSTANCE, SOLID, N.O.S.	ENVIRONMENTALLY HAZARDOUS SUBSTANCE, SOLID, N.O.S.
Transport document description				
UN 3077 ENVIRONMENTALLY	UN 3077 ENVIRONMENTALLY	UN 3077 Environmentally hazardous substance,	UN 3077 ENVIRONMENTALLY	UN 3077 ENVIRONMENTALLY

VICTORIA BLUE


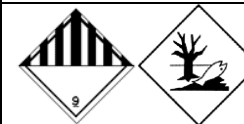
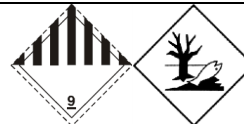


Safety Data Sheet

according to Regulation (EU) 2015/830

Date of issue: 21/02/2017



Doc No: SDS- 980.D01/0



ADR	IMDG	IATA	ADN	RID
HAZARDOUS SUBSTANCE, SOLID, N.O.S., 9, III, (E)	HAZARDOUS SUBSTANCE, SOLID, N.O.S., 9, III, MARINE POLLUTANT	solid, n.o.s., 9, III	HAZARDOUS SUBSTANCE, SOLID, N.O.S., 9, III	HAZARDOUS SUBSTANCE, SOLID, N.O.S., 9, III
14.3. Transport hazard class(es)				
9	9	9	9	9
				
14.4. Packing group				
III	III	III	III	III
14.5. Environmental hazards				
Dangerous for the environment : Yes	Dangerous for the environment : Yes Marine pollutant : Yes	Dangerous for the environment : Yes	Dangerous for the environment : Yes	Dangerous for the environment : Yes
No supplementary information available				

14.6. Special precautions for user

- Overland transport

Classification code (ADR)	: M7
Special provisions (ADR)	: 274, 335, 601, 375
Limited quantities (ADR)	: 5kg
Excepted quantities (ADR)	: E1
Packing instructions (ADR)	: P002, IBC08, LP02, R001
Mixed packing provisions (ADR)	: MP10
Portable tank and bulk container instructions (ADR)	: T1, BK1, BK2
Portable tank and bulk container special provisions (ADR)	: TP33
Tank code (ADR)	: SGAV, LGBV
Vehicle for tank carriage	: AT
Transport category (ADR)	: 3
Special provisions for carriage - Packages (ADR)	: V13
Special provisions for carriage - Bulk (ADR)	: VC1, VC2
Special provisions for carriage - Loading, unloading and handling (ADR)	: CV13
Hazard identification number (Kemler No.)	: 90
Orange plates	:  
Tunnel restriction code (ADR)	: E
EAC code	: 2Z

- Transport by sea

Special provisions (IMDG)	: 274, 335, 966, 967, 969
Limited quantities (IMDG)	: 5 kg
Excepted quantities (IMDG)	: E1
Packing instructions (IMDG)	: P002, LP02
Special packing provisions (IMDG)	: PP12
IBC packing instructions (IMDG)	: IBC08
IBC special provisions (IMDG)	: B3
Tank instructions (IMDG)	: T1, BK1, BK2, BK3
Tank special provisions (IMDG)	: TP33

VICTORIA BLUE

Safety Data Sheet

according to Regulation (EU) 2015/830

Date of issue: 21/02/2017

Doc No: SDS- 980.D01/0



EmS-No. (Fire) : F-A
EmS-No. (Spillage) : S-F
Stowage category (IMDG) : A
Stowage and handling (IMDG) : SW23
MFAg-No : 171

- Air transport

PCA Excepted quantities (IATA) : E1
PCA Limited quantities (IATA) : Y956
PCA limited quantity max net quantity (IATA) : 30kgG
PCA packing instructions (IATA) : 956
PCA max net quantity (IATA) : 400kg
CAO packing instructions (IATA) : 956
CAO max net quantity (IATA) : 400kg
Special provisions (IATA) : A97, A158, A179, A197
ERG code (IATA) : 9L

- Inland waterway transport

Classification code (ADN) : M7
Special provisions (ADN) : 274, 335, 375, 601
Limited quantities (ADN) : 5 kg
Excepted quantities (ADN) : E1
Carriage permitted (ADN) : T* B**
Equipment required (ADN) : PP, A
Number of blue cones/lights (ADN) : 0

- Rail transport

Classification code (RID) : M7
Special provisions (RID) : 274, 335, 375, 601
Limited quantities (RID) : 5kg
Excepted quantities (RID) : E1
Packing instructions (RID) : P002, IBC08, LP02, R001
Special packing provisions (RID) : PP12, B3
Mixed packing provisions (RID) : MP10
Portable tank and bulk container instructions (RID) : T1, BK1, BK2
Portable tank and bulk container special provisions (RID) : TP33
Tank codes for RID tanks (RID) : SGAV, LGBV
Transport category (RID) : 3
Special provisions for carriage – Packages (RID) : W13
Special provisions for carriage – Bulk (RID) : VC1, VC2
Special provisions for carriage - Loading, unloading and handling (RID) : CW13, CW31
Colis express (express parcels) (RID) : CE11
Hazard identification number (RID) : 90

14.7. Transport in bulk according to Annex II of Marpol and the IBC Code

Not applicable

SECTION 15: Regulatory information

15.1. Safety, health and environmental regulations/legislation specific for the substance or mixture

15.1.1. EU-Regulations

No REACH Annex XVII restrictions

[4-[[4-anilino-1-naphthyl]][4-(dimethylamino)phenyl]methylene]cyclohexa-2,5-dien-1-ylidene] dimethylammonium chloride (C.I. Basic Blue 26) [with ≥ 0.1% of Michler's ketone (EC No. 202-027-5) or Michler's base (EC No. 202-959-2)] is on the REACH Candidate List

VICTORIA BLUE is not on the REACH Annex XIV List

VICTORIA BLUE

Safety Data Sheet

according to Regulation (EU) 2015/830

Date of issue: 21/02/2017

Doc No: SDS- 980.D01/0



15.1.2. National regulations

Germany

- VwVwS Annex reference : Water hazard class (WGK) 3, severe hazard to waters (KBwS-Beschluss; ID No. 8420)
- WGK remark : Classification water polluting based on advice from the Kommission Bewertung wassergefährdender Stoffe (KBwS)
- 12th Ordinance Implementing the Federal Immission Control Act - 12.BImSchV : Is not subject of the 12. BImSchV (Hazardous Incident Ordinance)

Netherlands

- Waterbevaarlijkheid : 3 - May cause cancer
- SZW-lijst van kankerverwekkende stoffen : The substance is not listed
- SZW-lijst van mutagene stoffen : The substance is not listed
- NIET-limitatieve lijst van voor de voortplanting giftige stoffen – Borstvoeding : The substance is not listed
- NIET-limitatieve lijst van voor de voortplanting giftige stoffen – Vruchtbaarheid : The substance is not listed
- NIET-limitatieve lijst van voor de voortplanting giftige stoffen – Ontwikkeling : The substance is not listed

Denmark

- Recommendations Danish Regulation : Young people below the age of 18 years are not allowed to use the product
- Pregnant/breastfeeding women working with the product must not be in direct contact with the product
- The requirements from the Danish Working Environment Authorities regarding work with carcinogens must be followed during use and disposal

15.2. Chemical safety assessment

No chemical safety assessment has been carried out

SECTION 16: Other information

Abbreviations and acronyms:

ADN	European Agreement concerning the International Carriage of Dangerous Goods by Inland Waterways
ADR	European Agreement concerning the International Carriage of Dangerous Goods by Road
ATE	Acute Toxicity Estimate
BCF	Bioconcentration factor
CLP	Classification Labelling Packaging Regulation; Regulation (EC) No 1272/2008
EC50	Median effective concentration
IARC	International Agency for Research on Cancer
IATA	International Air Transport Association
IMDG	International Maritime Dangerous Goods
LC50	Median lethal concentration
LD50	Median lethal dose
PBT	Persistent Bioaccumulative Toxic
REACH	Registration, Evaluation, Authorisation and Restriction of Chemicals Regulation (EC) No 1907/2006
RID	Regulations concerning the International Carriage of Dangerous Goods by Rail
SDS	Safety Data Sheet
vPvB	Very Persistent and Very Bioaccumulative

- Data sources : REGULATION (EC) No 1272/2008 OF THE EUROPEAN PARLIAMENT AND OF THE COUNCIL of 16 December 2008 on classification, labelling and packaging of substances and mixtures, amending and repealing Directives 67/548/EEC and 1999/45/EC, and amending Regulation (EC) No 1907/2006.

Full text of H- and EUH-statements:

Acute Tox. 4 (Oral)	Acute toxicity (oral), Category 4
Aquatic Acute 1	Hazardous to the aquatic environment — Acute Hazard, Category 1
Aquatic Chronic 1	Hazardous to the aquatic environment — Chronic Hazard, Category 1
Carc. 1B	Carcinogenicity, Category 1B
Eye Irrit. 2	Serious eye damage/eye irritation, Category 2
H302	Harmful if swallowed
H319	Causes serious eye irritation

VICTORIA BLUE

Safety Data Sheet

according to Regulation (EU) 2015/830

Date of issue: 21/02/2017

Doc No: SDS- 980.D01/0



H350	May cause cancer
H400	Very toxic to aquatic life
H410	Very toxic to aquatic life with long lasting effects

SDS ISOLAB

This information is based on our current knowledge and is intended to describe the product for the purposes of health, safety and environmental requirements only. It should not therefore be construed as guaranteeing any specific property of the product