

METHYLENE BLUE

Safety Data Sheet

according to Regulation (EU) 2015/830

Date of issue: 01/06/2022

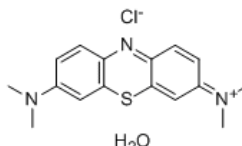
Doc No: SDS-947.D04/2



SECTION 1: Identification of the substance/mixture and of the company/undertaking

1.1. Product identifier

Product form : Substance
Substance name : METHYLENE BLUE FOR MICROSCOPY
EC No : 200-515-2
CAS No : 122965-43-9
Type of product : Pure substance
Formula : $C_{16}H_{18}ClN_3S \cdot H_2O$
Chemical structure :



Synonyms : Phenothiazin-5-ium, 3,7-bis(dimethylamino)-, chloride, hydrate

1.2. Relevant identified uses of the substance or mixture and uses advised against

1.2.1. Relevant identified uses

Industrial/Professional use spec : For professional use only
Use of the substance/mixture : Chemical raw material
For microscopy
Laboratory chemical

1.2.2. Uses advised against

No additional information available

1.3. Details of the supplier of the safety data sheet

ISOLAB Laborgeräte GmbH
Am Dillhof 2 - 63863 Eschau / GERMANY
Tel: +49 93 74 / 978 55-0
Fax: +49 93 74 / 978 55-29
prodsafe@isolab.de

1.4. Emergency telephone number

Country	Organisation/Company	Address	Emergency number	Comment
Germany	Giftnotruf der Charité CBF, Haus VIII (Wirtschaftsgebäude), UG	Hindenburgdamm 30 12203 Berlin	+49 30 19240	

SECTION 2: Hazards identification

2.1. Classification of the substance or mixture

Classification according to Regulation (EC) No. 1272/2008 [CLP]

Acute Tox. 4 (Oral) H302

Full text of hazard classes and H-statements : see section 16

Adverse physicochemical, human health and environmental effects

Harmful if swallowed.

2.2. Label elements

Labelling according to Regulation (EC) No. 1272/2008 [CLP]

Hazard pictograms (CLP) :



GHS07

Signal word (CLP) : Warning
Hazard statements (CLP) : H302 - Harmful if swallowed
Precautionary statements (CLP) : P264 - Wash hands, forearms and face thoroughly after handling
P270 - Do not eat, drink or smoke when using this product
P301+P312 - IF SWALLOWED: Call a POISON CENTER or doctor if you feel unwell
P501 - Dispose of this material and its container to hazardous or special waste collection point,

METHYLENE BLUE

Safety Data Sheet

according to Regulation (EU) 2015/830

Date of issue: 01/06/2022

Doc No: SDS-947.D04/2



in accordance with local, regional, national and/or international regulation.

2.3. Other hazards

This substance/mixture does not meet the PBT criteria of REACH regulation, annex XIII

This substance/mixture does not meet the vPvB criteria of REACH regulation, annex XIII

SECTION 3: Composition/information on ingredients

3.1. Substances

Name	Product identifier	%
METHYLENE BLUE	(CAS No) 122965-43-9 (EC No) 200-515-2	100

Full text of H-statements: see section 16

3.2. Mixtures

Not applicable

SECTION 4: First aid measures

4.1. Description of first aid measures

First-aid measures general	: Call a poison center or a doctor if you feel unwell.
First-aid measures after inhalation	: Remove person to fresh air and keep comfortable for breathing.
First-aid measures after skin contact	: Wash skin with plenty of water.
First-aid measures after eye contact	: Rinse eyes with water as a precaution.
First-aid measures after ingestion	: Rinse mouth. Call a poison center or a doctor if you feel unwell.

4.2. Most important symptoms and effects, both acute and delayed

No additional information available

4.3. Indication of any immediate medical attention and special treatment needed

Treat symptomatically.

SECTION 5: Fire-fighting measures

5.1. Extinguishing media

Suitable extinguishing media : Water spray. Dry powder. Foam.

5.2. Special hazards arising from the substance or mixture

Hazardous decomposition products in case of fire : Toxic fumes may be released.

5.3. Advice for firefighters

Protection during firefighting : Do not attempt to take action without suitable protective equipment. Self-contained breathing apparatus. Complete protective clothing.

SECTION 6: Accidental release measures

6.1. Personal precautions, protective equipment and emergency procedures

6.1.1. For non-emergency personnel

Emergency procedures : Ventilate spillage area.

6.1.2. For emergency responders

Protective equipment : Do not attempt to take action without suitable protective equipment. For further information refer to section 8: "Exposure controls/personal protection".

6.2. Environmental precautions

Avoid release to the environment.

6.3. Methods and material for containment and cleaning up

Methods for cleaning up : Mechanically recover the product.
Other information : Dispose of materials or solid residues at an authorized site.

6.4. Reference to other sections

For further information refer to section 13.

METHYLENE BLUE

Safety Data Sheet

according to Regulation (EU) 2015/830

Date of issue: 01/06/2022

Doc No: SDS-947.D04/2



SECTION 7: Handling and storage

7.1. Precautions for safe handling

Precautions for safe handling : Ensure good ventilation of the work station. Wear personal protective equipment.
Hygiene measures : Do not eat, drink or smoke when using this product. Always wash hands after handling the product.

7.2. Conditions for safe storage, including any incompatibilities

Storage conditions : Store in a well-ventilated place. Keep cool.

7.3. Specific end use(s)

No additional information available

SECTION 8: Exposure controls/personal protection

8.1. Control parameters

No additional information available

8.2. Exposure controls

Appropriate engineering controls:

Ensure good ventilation of the work station.

Hand protection:

Protective gloves

Eye protection:

Safety glasses

Skin and body protection:

Wear suitable protective clothing

Respiratory protection:

In case of insufficient ventilation, wear suitable respiratory equipment

Environmental exposure controls:

Avoid release to the environment.

SECTION 9: Physical and chemical properties

9.1. Information on basic physical and chemical properties

Physical state : Solid
Appearance : Powder.
Molecular mass : 319.86 g/mol
Colour : Dark green.
Odour : odourless.
Odour threshold : No data available
pH : No data available
Relative evaporation rate (butylacetate=1) : No data available
Melting point : 190 °C
Freezing point : Not applicable
Boiling point : No data available
Flash point : Not applicable
Auto-ignition temperature : Not applicable
Decomposition temperature : No data available
Flammability (solid, gas) : Non flammable
Vapour pressure : No data available
Relative vapour density at 20 °C : No data available
Relative density : Not applicable
Solubility : Soluble in water. Soluble in ethanol. Soluble in chloroform. Soluble in acetic acid. Soluble in glycerol.
Log Pow : No data available

METHYLENE BLUE

Safety Data Sheet

according to Regulation (EU) 2015/830

Date of issue: 01/06/2022

Doc No: SDS-947.D04/2



Log Kow	: 5.85
Viscosity, kinematic	: Not applicable
Viscosity, dynamic	: No data available
Explosive properties	: No data available
Oxidising properties	: No data available
Explosive limits	: Not applicable

9.2. Other information

No additional information available

SECTION 10: Stability and reactivity

10.1. Reactivity

The product is non-reactive under normal conditions of use, storage and transport.

10.2. Chemical stability

Stable under normal conditions.

10.3. Possibility of hazardous reactions

No dangerous reactions known under normal conditions of use.

10.4. Conditions to avoid

None under recommended storage and handling conditions (see section 7). Direct sunlight. Extremely high or low temperatures.

10.5. Incompatible materials

Strong acids. Strong bases.

10.6. Hazardous decomposition products

Under normal conditions of storage and use, hazardous decomposition products should not be produced.

SECTION 11: Toxicological information

11.1. Information on toxicological effects

Acute toxicity	: Oral: Harmful if swallowed.
Skin corrosion/irritation	: Not classified
Serious eye damage/irritation	: Not classified
Respiratory or skin sensitisation	: Not classified
Germ cell mutagenicity	: Not classified
Carcinogenicity	: Not classified
Reproductive toxicity	: Not classified
STOT-single exposure	: Not classified
STOT-repeated exposure	: Not classified
Aspiration hazard	: Not classified

SECTION 12: Ecological information

12.1. Toxicity

Ecology - general : The product is not considered harmful to aquatic organisms nor to cause long-term adverse effects in the environment.

12.2. Persistence and degradability

No additional information available

12.3. Bioaccumulative potential

METHYLENE BLUE (122965-43-9)	
Log Kow	5.85

12.4. Mobility in soil

No additional information available

12.5. Results of PBT and vPvB assessment

METHYLENE BLUE (122965-43-9)
This substance/mixture does not meet the PBT criteria of REACH regulation, annex XIII

METHYLENE BLUE

Safety Data Sheet

according to Regulation (EU) 2015/830

Date of issue: 01/06/2022

Doc No: SDS-947.D04/2



METHYLENE BLUE (122965-43-9)

This substance/mixture does not meet the vPvB criteria of REACH regulation, annex XIII

12.6. Other adverse effects

No additional information available

SECTION 13: Disposal considerations

13.1. Waste treatment methods

Waste treatment methods : Dispose of contents/container in accordance with licensed collector's sorting instructions.

SECTION 14: Transport information

In accordance with ADR / RID / IMDG / IATA / ADN

ADR	IMDG	IATA	ADN	RID
14.1. UN number				
Not applicable	Not applicable	Not applicable	Not applicable	Not applicable
14.2. UN proper shipping name				
Not applicable	Not applicable	Not applicable	Not applicable	Not applicable
Not applicable	Not applicable	Not applicable	Not applicable	Not applicable
14.3. Transport hazard class(es)				
Not applicable	Not applicable	Not applicable	Not applicable	Not applicable
Not applicable	Not applicable	Not applicable	Not applicable	Not applicable
14.4. Packing group				
Not applicable	Not applicable	Not applicable	Not applicable	Not applicable
14.5. Environmental hazards				
Not applicable	Not applicable	Not applicable	Not applicable	Not applicable
No supplementary information available				

14.6. Special precautions for user

- Overland transport

Not applicable

- Transport by sea

Not applicable

- Air transport

Not applicable

- Inland waterway transport

Not applicable

- Rail transport

Not applicable

14.7. Transport in bulk according to Annex II of Marpol and the IBC Code

Not applicable

SECTION 15: Regulatory information

15.1. Safety, health and environmental regulations/legislation specific for the substance or mixture

15.1.1. EU-Regulations

No REACH Annex XVII restrictions

METHYLENE BLUE is not on the REACH Candidate List

METHYLENE BLUE is not on the REACH Annex XIV List

15.1.2. National regulations

Listed on PICCS (Philippines Inventory of Chemicals and Chemical Substances)

Listed on the TCSI (Taiwan Chemical Substance Inventory)

Germany

METHYLENE BLUE

Safety Data Sheet

according to Regulation (EU) 2015/830

Date of issue: 01/06/2022

Doc No: SDS-947.D04/2



12th Ordinance Implementing the Federal Immission Control Act - 12.BImSchV : Is not subject of the 12. BImSchV (Hazardous Incident Ordinance)

Netherlands

SZW-lijst van kankerverwekkende stoffen : The substance is not listed

SZW-lijst van mutagene stoffen : The substance is not listed

NIET-limitatieve lijst van voor de voortplanting giftige stoffen – Borstvoeding : The substance is not listed

NIET-limitatieve lijst van voor de voortplanting giftige stoffen – Vruchtbaarheid : The substance is not listed

NIET-limitatieve lijst van voor de voortplanting giftige stoffen – Ontwikkeling : The substance is not listed

15.2. Chemical safety assessment

No chemical safety assessment has been carried out

SECTION 16: Other information

Abbreviations and acronyms:

ADN	European Agreement concerning the International Carriage of Dangerous Goods by Inland Waterways
ADR	European Agreement concerning the International Carriage of Dangerous Goods by Road
ATE	Acute Toxicity Estimate
CLP	Classification Labelling Packaging Regulation; Regulation (EC) No 1272/2008
EC50	Median effective concentration
IATA	International Air Transport Association
IMDG	International Maritime Dangerous Goods
PBT	Persistent Bioaccumulative Toxic
REACH	Registration, Evaluation, Authorisation and Restriction of Chemicals Regulation (EC) No 1907/2006
RID	Regulations concerning the International Carriage of Dangerous Goods by Rail
SDS	Safety Data Sheet
vPvB	Very Persistent and Very Bioaccumulative

Data sources : REGULATION (EC) No 1272/2008 OF THE EUROPEAN PARLIAMENT AND OF THE COUNCIL of 16 December 2008 on classification, labelling and packaging of substances and mixtures, amending and repealing Directives 67/548/EEC and 1999/45/EC, and amending Regulation (EC) No 1907/2006.

Full text of H- and EUH-statements:

Acute Tox. 4 (Oral)	Acute toxicity (oral), Category 4
H302	Harmful if swallowed

SDS ISOLAB

This information is based on our current knowledge and is intended to describe the product for the purposes of health, safety and environmental requirements only. It should not therefore be construed as guaranteeing any specific property of the product